

- Count Stations**
- ATR
 - HPMS
 - Index Station
 - Interstate/Toll Road
 - Local HPMS
 - Full Coverage
 - Road Area
 - Urban Minor
 - Adjacent County
 - Traffic Section Terminus
 - Count (Collection Year)
 - Station ID
- Functional Classification**
- Rural Interstate
 - Rural Principal Arterial
 - Rural Minor Arterial
 - Rural Minor Collector
 - Rural Local
 - Urban Interstate
 - Urban Freeway & Expressways
 - Urban Principal Arterial
 - Urban Minor Arterial Street
 - Urban Collector Street
 - Urban Local
- Local Road System**
- Unimproved or Forest Service
 - Unimproved
 - Crushed Stone or Gravel
 - Intermediate Paved
 - High Type Paved
- Other Features**
- Stream
 - Railroad
 - Bridge
 - City/Town
 - Incorporated Area Boundary
 - Urban Area Boundary
 - Lake
 - Wildlife Management Area
 - State Park
 - Nature Preserve
 - National Forest
 - State Forest
 - Army

Traffic Station Counts

JEFFERSON COUNTY

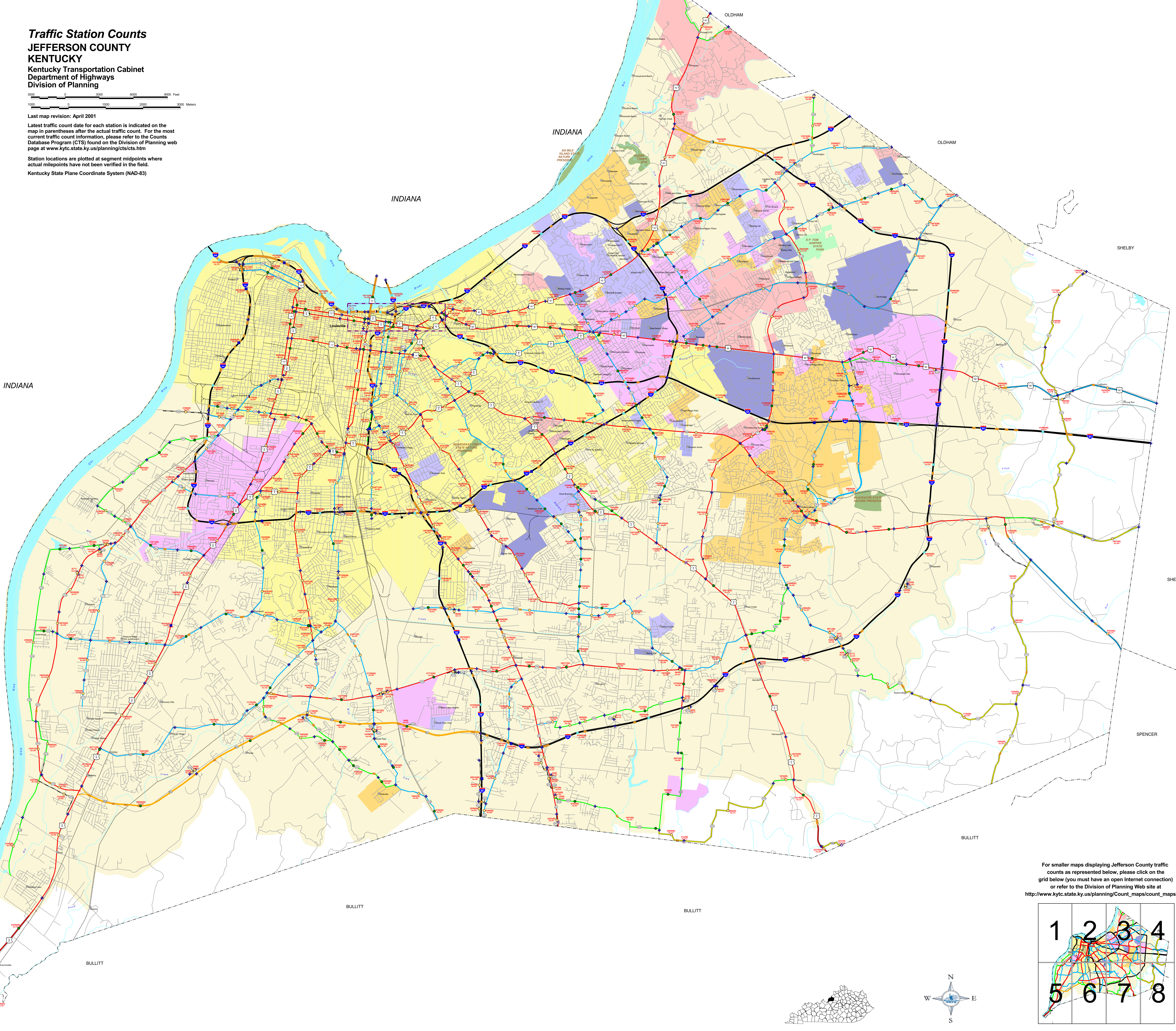
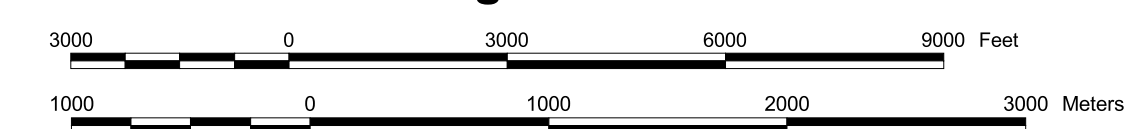
KENTUCKY

Kentucky Transportation Cabinet
Department of Highways
Division of Planning

Last map revision: April 2001

Latest traffic count date for each station is indicated on the map in parentheses after the actual traffic count. For the most current traffic count information, please refer to the Counts Database Program (CTS) found on the Division of Planning web page at www.kytc.state.ky.us/planning/cts/cts.htm

Station locations are plotted at segment midpoints where actual milepoints have not been verified in the field.
Kentucky State Plane Coordinate System (NAD-83)



For smaller maps displaying Jefferson County traffic counts as represented below, please click on the grid below (you must have an open Internet connection) or refer to the Division of Planning Web site at http://www.kytc.state.ky.us/planning/Count_maps/count_maps.htm

